

LACERA

A Sustainable Retirement Plan

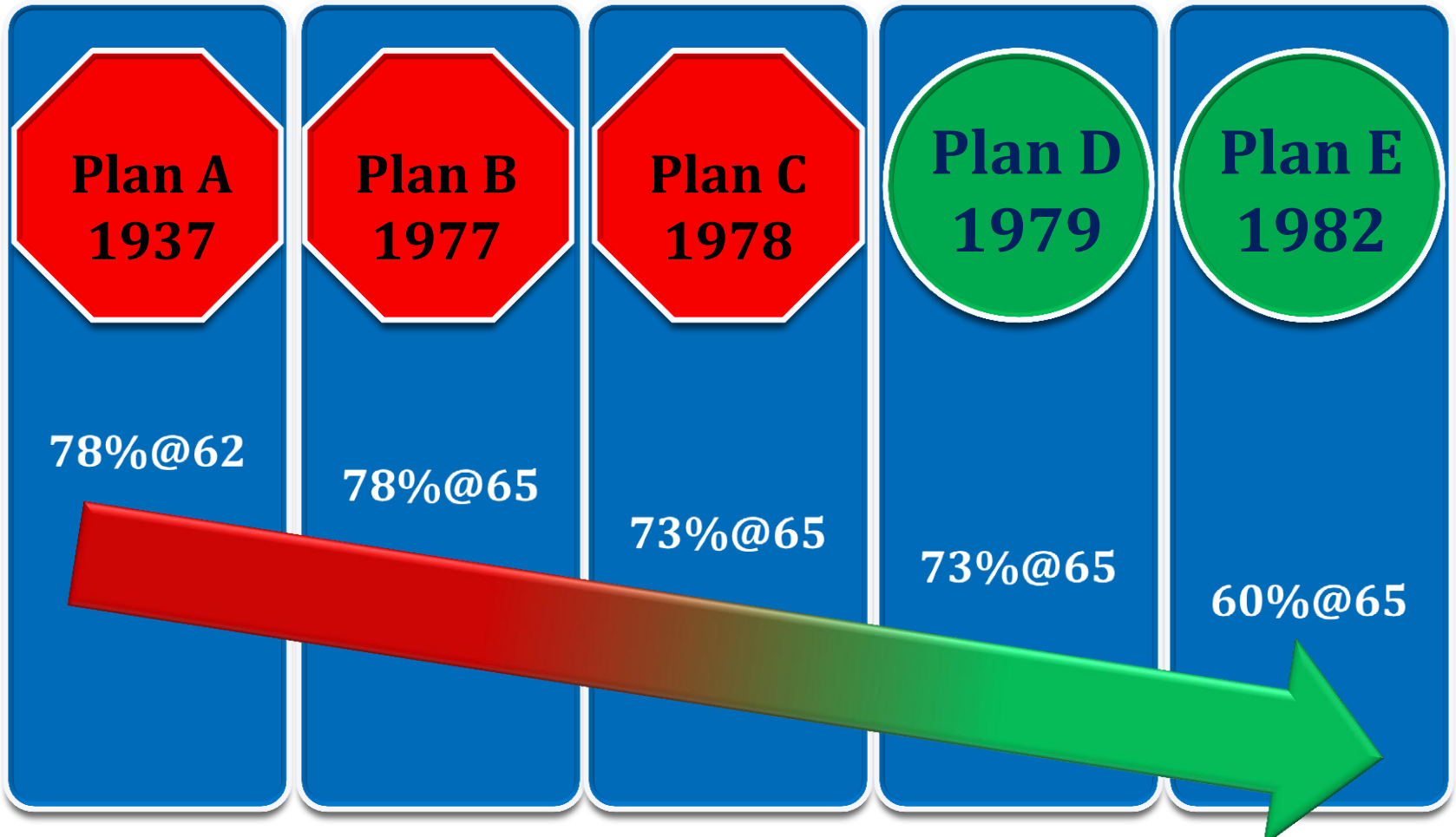


Exploring Plan E

Conference Committee on Public Employee Pensions

April 13, 2012

Pension Reforms

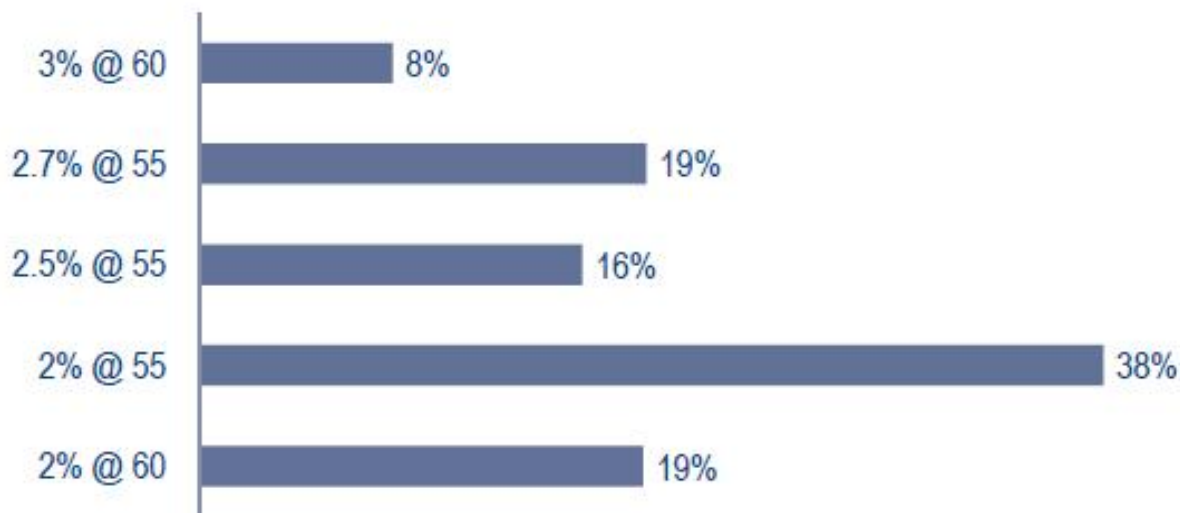


Pension Benefit Percentage at Maximum Retirement Age - 30 Years of Service

Comparison to CalPERS Plans

Benefits

Percentage of All Miscellaneous Plans by Formula



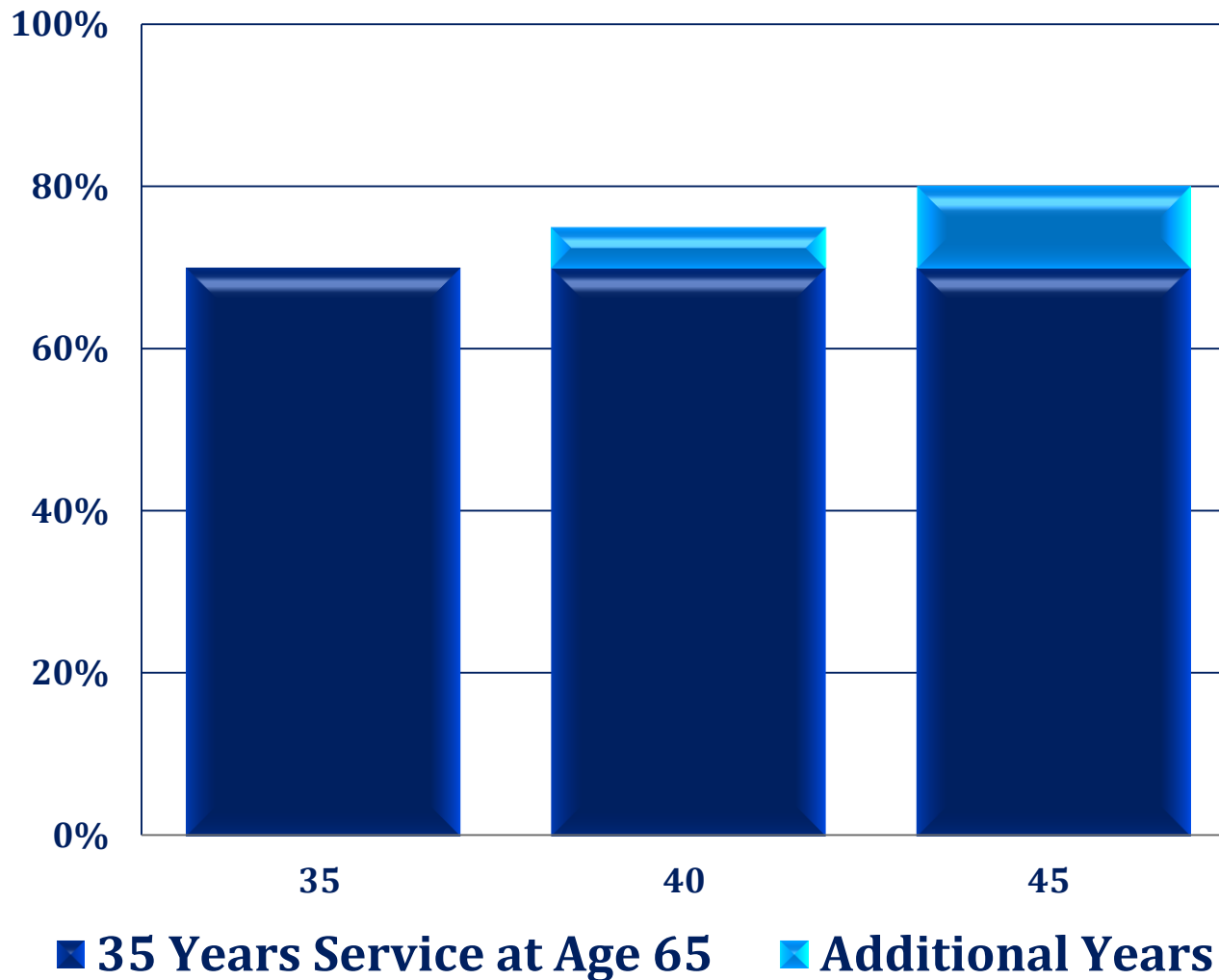
LACERA

Plan A : 2%@55

Plan D : 2%@61

Plan E : 2%@65

Compensation Replacement



Retire Age 65

**2% per year for
first 35 years
worked**

**1% per year
worked years 36
through 45**

**Maximum :
80% of Final
Compensation**

3 Year F. A. C.

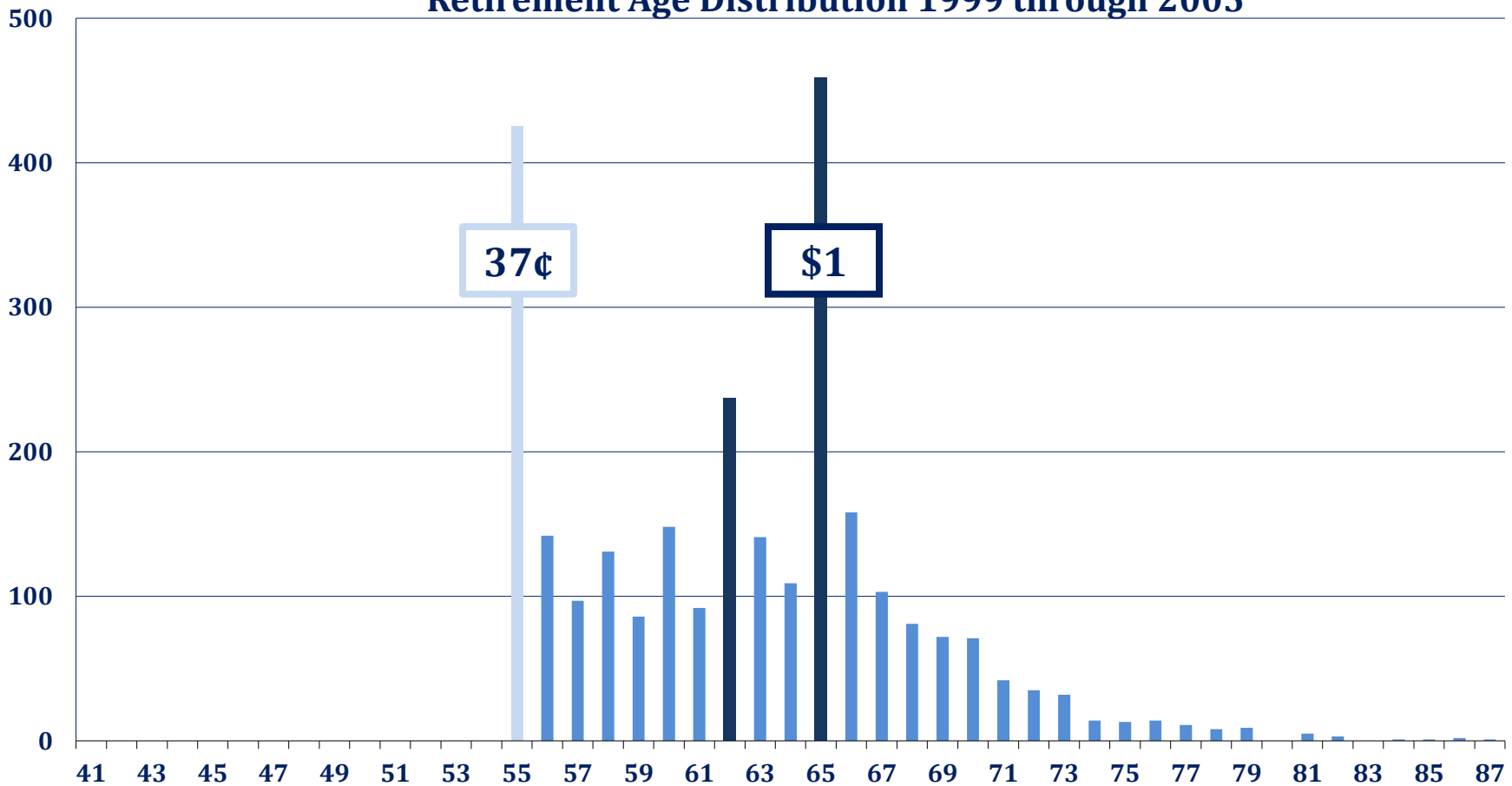
Compensation Replacement

Plan E

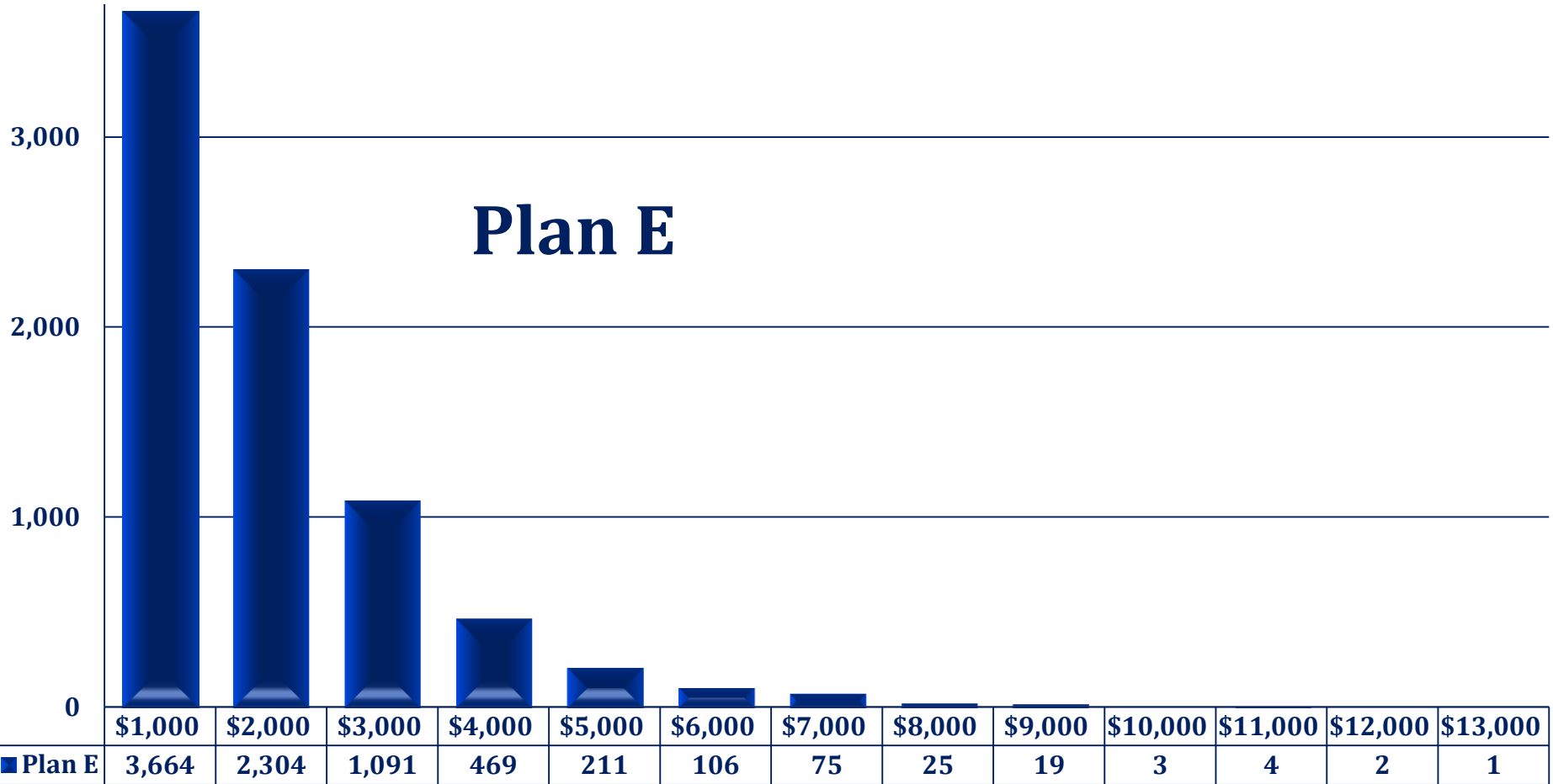
Years of County Service	Average Retirement Age	Average Compensation Replacement	Retiree Count	Retiree Count Percentage
1 to 10	63	11%	163	5%
11 to 24	62	26%	1,292	38%
25 to 34	63	46%	1,026	30%
35 (Governor's Target)	63	51%	114	3%
More than 35	63	60%	828	24%

Normal Retirement Age

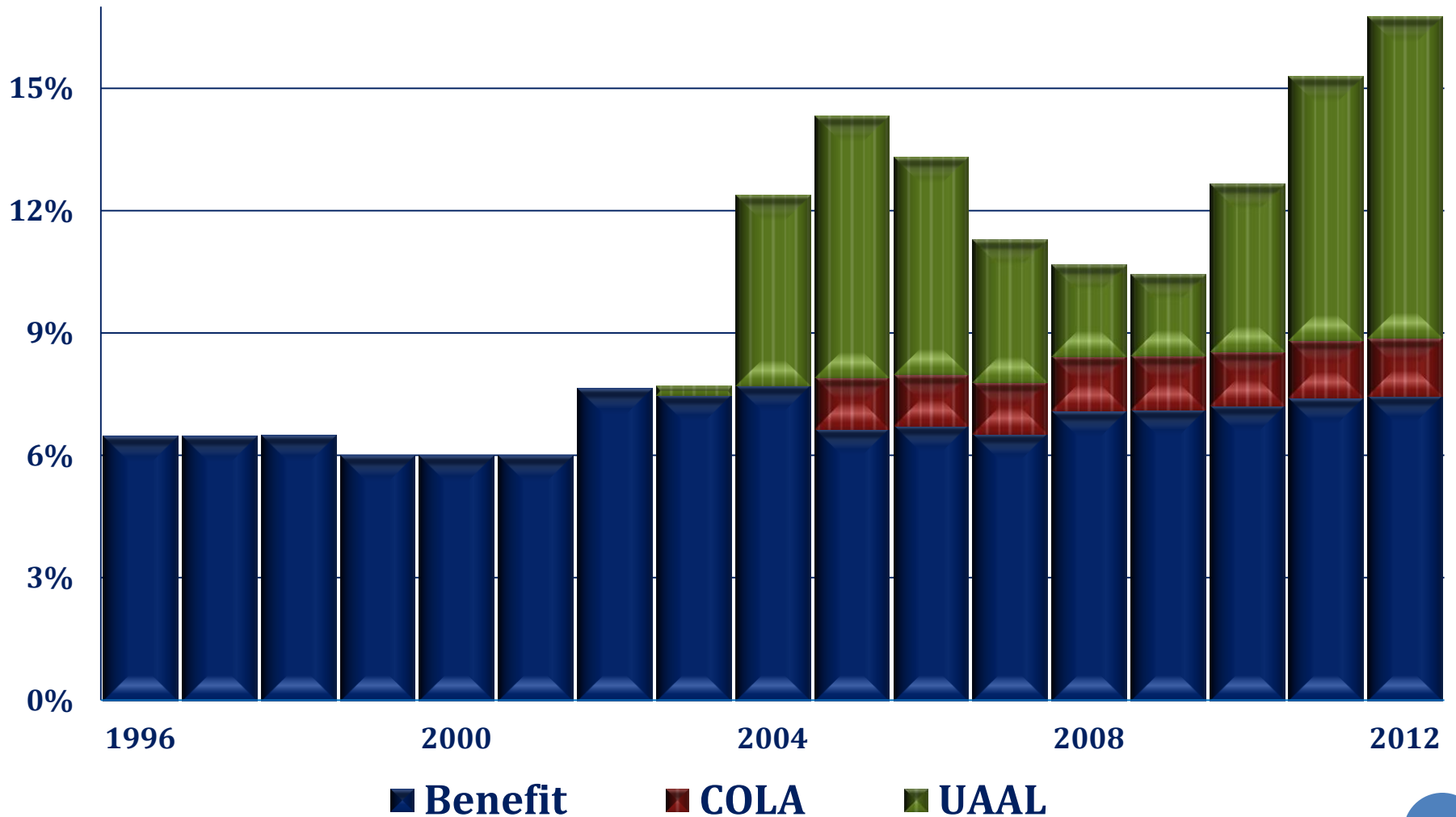
Plan E
Open Plan Since 1982
Retirement Age Distribution 1999 through 2005



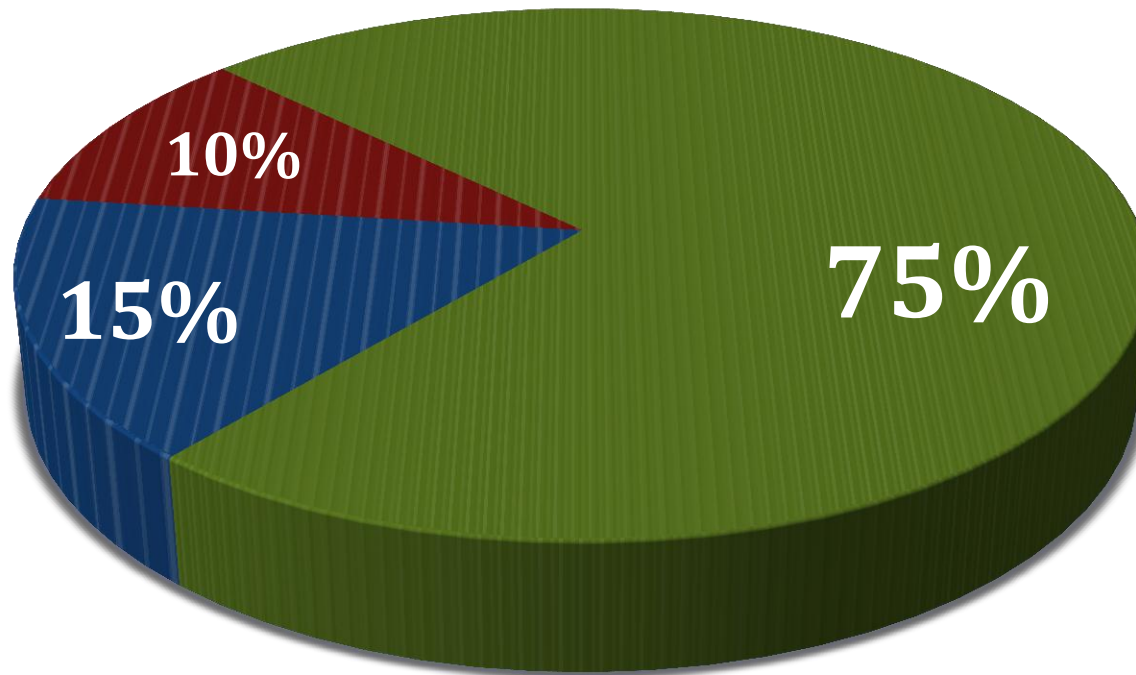
Payroll Count Distribution



Employer Rate – Plan E



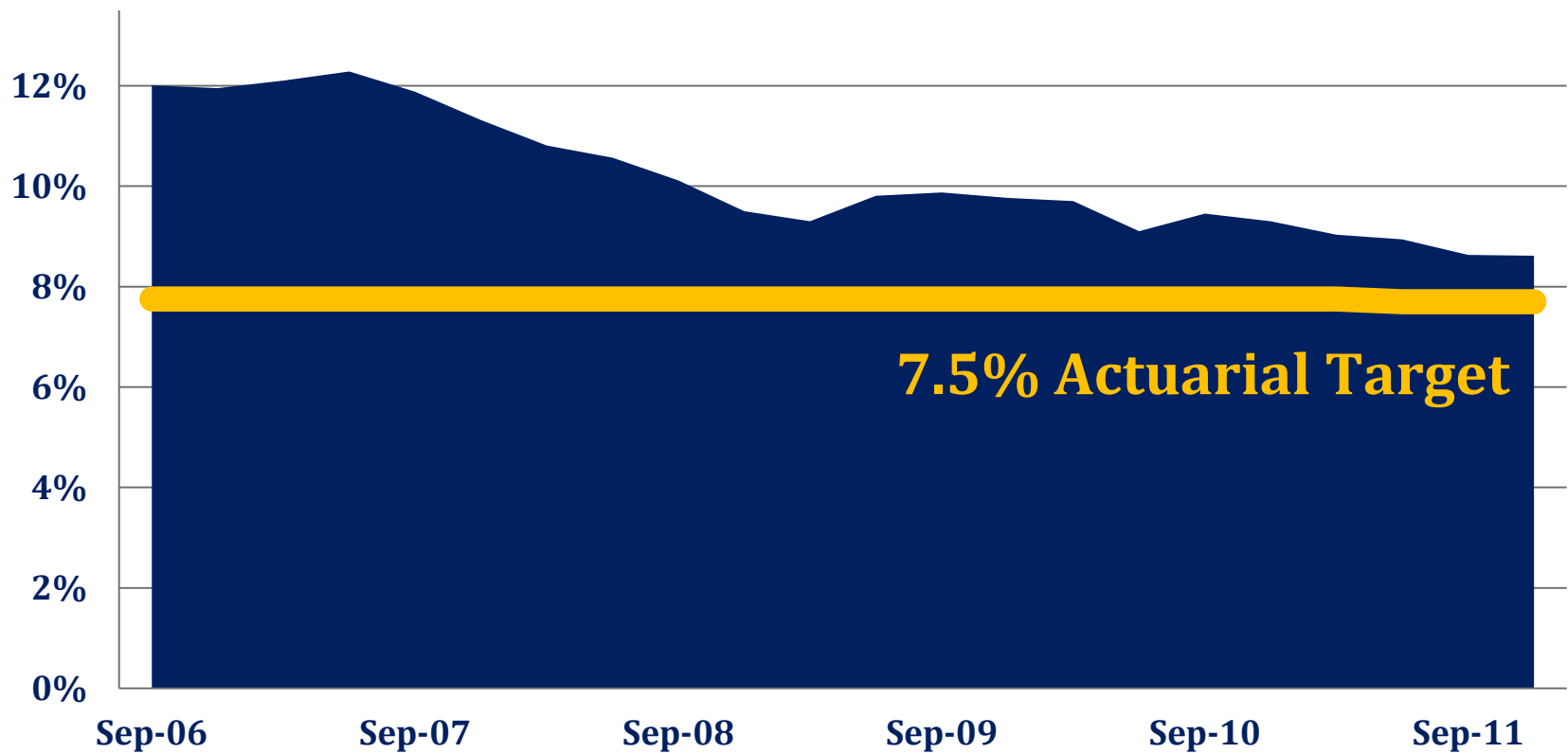
Plan Funding



■ Employer ■ Employee ■ Investments

Long Term Investor

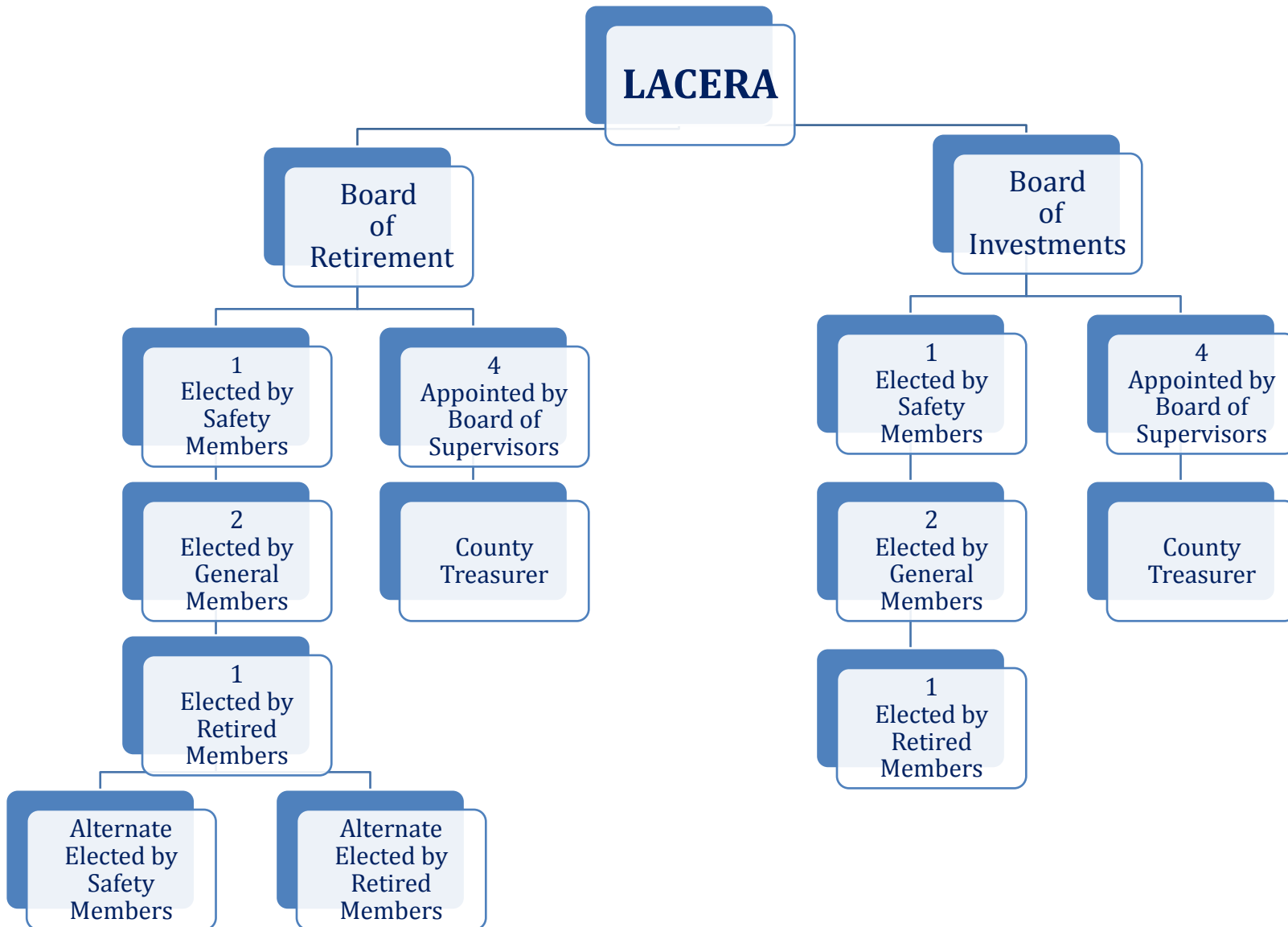
Rolling 25 Year Portfolio Return



■ Rolling 25 Year Return

— 7.5% Actuarial Target Return

Independent Boards



LACERA

A Sustainable Retirement Plan

Gregg Rademacher

Chief Executive Officer

300 N. Lake Avenue, Suite 820

Pasadena, CA 91101

grademacher@lacera.com